



JIP Update: Version 0.7.0. User Guide- November 2003.

Introduction

After obtaining a high-speed Internet connection, the next step was to be able to control my own domain name. This is because I want to be able to access my home computer files from anywhere.

I got myself a domain name and ask my domain providers how to access my home computer files from anywhere. They recommended Dyndns.Org. I went to the www.dyndns.org homepage and read in details until I understood what it's all about.

After downloading and trying a couple of client updates, I decided to write one that would suite my demands (in other words simple and easier to use), since Dynamic DNS Network Service encourages the development of automated update clients for the various services they provide. In addition "Dns" service providers believe that a wide selection of clients is beneficial to the users.

This small but powerful program was then written and shared among colleagues on the University campus. After using it on the campus for a while it was decided to share it with the rest of the Dyn community.

Today, there are several of Dns service providers available on the market that give "free" domain names to customers to hook it to their IP number in other to access their machine from anywhere or use as a server to the public. Hence JIP has been extended to include some Dns Service provider. Jip project group will be including more service providers with time. If and only if these service providers agree to release their update syntax. So as you read this manual, do not hesitate to contact the JIP project group if you have any Dns service provider in mind that you would like us to include.

This program is dedicated to the free software foundation. Any comment, suggestions, help of any sort is welcome.

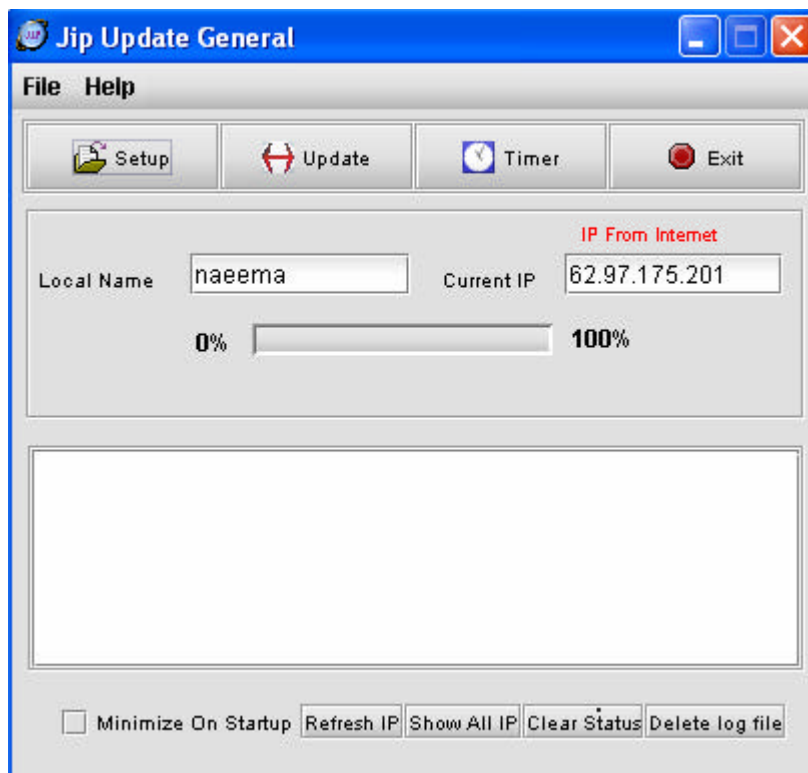


Main Window

The main frame has changed a bit since the first release. If you are still using a version older than version 0.6 then get yourself a newer version.

Extra buttons have now been added to the main frame. These include “show all IP”, “clear status”, “minimize on start up”, and “refresh IP” can be found at the bottom of the frame

The main frame consists of the following buttons:



- **Setup:** On click brings up the user account setup frame window.
- **Update:** On click updates your domain account even if a scheduled timer is in progress.
- **Timer:** On click brings up the timer window frame.
- **Exit:** Dismisses the program.



JIP Update Contact: www.bashiro.com/soft

- **Minimize on start up:** This will minimize (iconify) the main frame on start up. Thanks to Walter Metcalf of OS/2 doctor for this brilliant idea.
- **Refresh IP:** This will refresh the IP number. This is useful if you change the option in “Get IP from” (in the Account setup frame).
- **Show all IP:** On clicking this will show all available IP numbers including local IPs.
- **Clear status:** This clears the status in the main frame after manual update.
- **Delete Log File:** Every time you perform a manual update or if Jip runs auto update, a log file (“log.txt”) is created in the Jip directory. If a “log.txt” already present, then the log will be appended on log file. With time, this log file becomes very long and hence needs to be deleted. You can use this button to delete the log file.

In addition:

The main frame displays the name of your machine in the “Local name” and displays your IP in the “current IP”. Some Mac users may experience dark paint over the “current IP” box. This does **not** affect JIP in anyway.

Setup frame (User Account):

The Account setup frame has also got additional functions. “Get IP”, “System type” (dyndns users only) and “Dns type” (for other dns service users)” or service type has been added. And you are now free to choose if you would like the dyn server to automatically detect you IP during update, or if you would like Jip to send your IP during update.

To the main Account Frame;

1. Here you fill in your username, password, host1 and host2 (if any). Choose how you want Jip to get your IP. You can also choose to include the IP number when updating or let the dyndns server detect it. Then click on the save icon to save the particulars.



JIP Update Contact: www.bashiro.com/soft

Users of du\yndns.Org will see the setup screen as shown below:

The screenshot shows the 'Jip Account Setup' window. At the top are buttons for 'Save', 'Reset', and 'Close'. The main area is divided into two columns. The left column contains 'Username' (bashiro), 'Password' (masked with asterisks), and 'Get Ip From' (a dropdown menu set to 'jip'). The right column contains 'Host 1' (bashiro.servftp.net), 'Host 2' (bashiro.homeftp.net), and 'System' (a dropdown menu set to 'dynamic'). Below these is a section titled 'When Sending Update' with two radio buttons: 'Let Dyndns Server Detect My IP' (selected) and 'Include My IP'. At the bottom, it says 'Data loaded from database'.

Users of other dns service provider will see the setup screen shown below:

The screenshot shows the 'Jip Account Setup' window for other DNS service providers. It has the same layout as the previous window. The left column contains 'User' (Username: bashiro, Password: masked), and 'Get IP From' (a dropdown menu set to 'internet'). The right column contains 'Domain' (Host 1: bashiro.dns.dns, Host 2: empty), and 'DNS Service' (a dropdown menu set to 'none'). Below these is a section titled 'When Sending Update' with two radio buttons: 'Let Server Detect My IP' (selected) and 'Include My IP'. At the bottom, it says 'Data loaded from database'.

2. JIP update uses the information you provide here to update your domain. For the time being the program supports up to two domain accounts. It is rare that people have more than two accounts. Therefore this program supports bulk



JIP Update Contact: www.bashiro.com/soft

update of up to two accounts at the same time. If you have more than two accounts, or if you want to do bulk update for more than two accounts then you have to first fill in your accounts save it and then update manual update. Afterwards you do the same for the rest of the accounts. Or do manual update on the dns service provider homepage. If you demand that JIP should include more accounts, do not hesitate to contact us.

3. As stated above, there is now “Get IP from” which you can choose to get your IP from either JIP or Internet. And you can also specify your service type (dynamic, static or custom).

IMPORTANT

If you change the value of the “Get IP from” or the value of the “dns service type” Jip saves it automatically. Therefore you do not need to click on the save button. If on the other hand you decide to click on the save button, then you must retype your password again before clicking on save. This is because the password is cryptic before save. When you open the account setup window the cryptic password is loaded. So if you click on save one more time the cryptic password will be retyped and then saved. This will be wrong. Hence anytime you decide to click on the save button; re-type your password.

Timer frame (Scheduling frame):

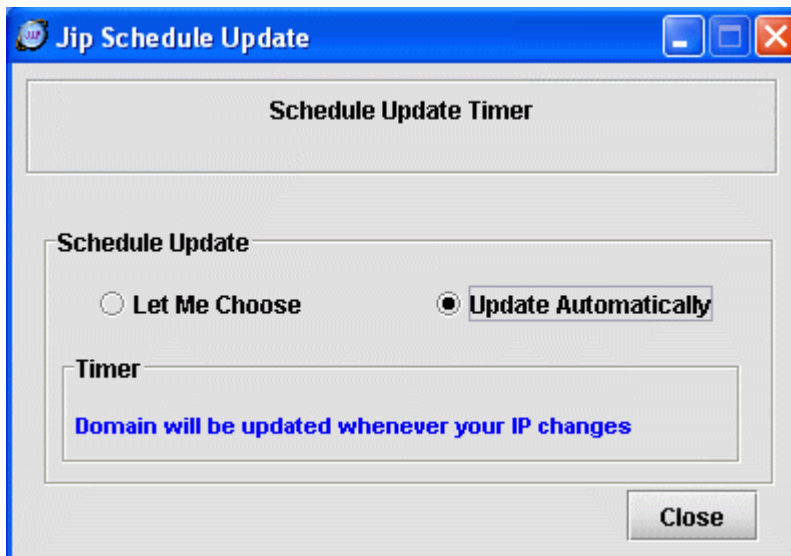
Here you choose from the two alternatives. There have not been any changes here.

- Let me choose: Here you can specify when you want JIP to update your domain. You can choose from 1-30 days.



JIP Update Contact: www.bashiro.com/soft

- Update automatically (recommended): This choice is recommended because the Dyn administrators prefer IP numbers to be updated only when your IP changes. This is exactly what this does. It checks your IP in an interval of about 10-15 minutes and if it has changed the program updates your IP.



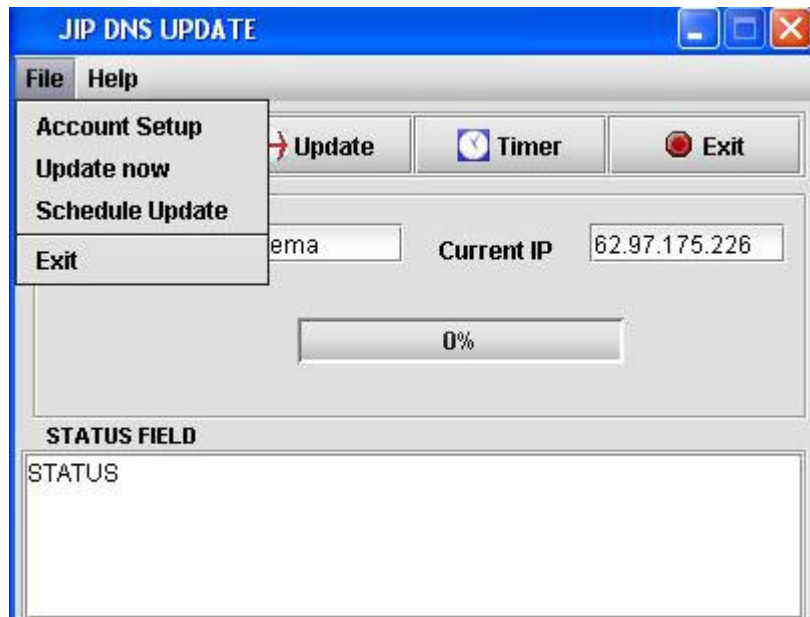


JIP Update Contact: www.bashiro.com/soft

File Menu Items

The file menu items has got one new submenu item “” since version 0.6. The menu items consist of the following:

- **File;** has the following sub menus

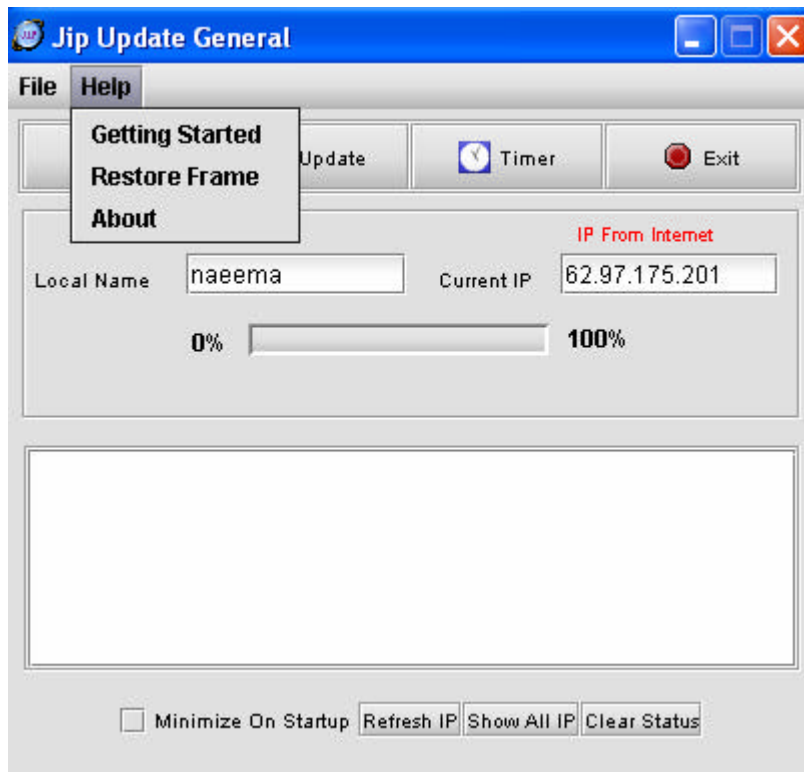


1. Account Setup; does the same task as setup icon on the main frame. On click opens the account setup window.
2. Update now; on click updates your domain.
3. Schedule Update; This does the same task us the timer icon on the main window frame. On click brings up the timer-scheduling window.
4. Exit; dismisses the program



JIP Update Contact: www.bashiro.com/soft

- **Help:** has got one new option since version 0.6 and has the following:



1. Getting started: gives you hint on how to use the program.
2. Restore Frame: Previously the main frame gets disappeared in some OS/2 users when they choose to minimize the frame on start up. So this submenu shows the guidelines on how to restore the frame back to default. Although this problem has now been solved but jet the JIP project group has chosen to include it just in case.
3. About: Gives information about JIP.

How JIP Update Works.

Previously in the versions prior to 0.6, when you start JIP for the first time, it will try to run update. This feature has been disabled since some users did not like that. But, if you choose to update jip by days then JIP will update anytime when it starts. It uses test accounts to run the update for the first time. If your internet connection is not working, or if it cannot get contact



JIP Update Contact: www.bashiro.com/soft

with the server you will get error messages in the status window else you will get the message “Update successful”

After starting up for the first time you have to click on setup to enter your account particulars. This information will be stored in the database and used by JIP to update your IP.

Any time when you start or restart JIP, it reads your IP and save it in the database. If you choose “update automatically” in the “Timer”, JIP reads your IP periodically, and then compare it to the IP information in the database. If there is any change then it will update your domain instantly.

FAQ

1. **Why the name JIP?**

JIP was written in pure java, hence the name Java IP-Number Update that has been shortened to JIP Update.

2. **Where do I report Bugs / Comments/Suggestions etc?**

Just send e-mail to: post@babshiro.com or babshiro@enter.vg

3. **How much does this cost?**

It's Free. No Cost.

4. **My program has refused to start / run. What should I do?**

Reinstall Java runtime - You will find it on the installation CD in the folder “Jre”. Or download it from <http://java.sun.com/j2se/1.4.1/download.html> If possible reinstall the program (the software) again.

5. **I use JIP and sometimes when doing update I get the message that my password is not correct. Or I do get a popup window to fill out my password even if my password is correct. Why?**

The reason why is that when you fill out your data in the setup and save, the password is cryptic and then saved. So when you go to setup the next time, the cryptic password is being loaded. Therefore if you click on save the crated password will be cryptic again and saved. The best way is that whenever you want to click on the save button; make sure you write your password again before clicking on the save button.