



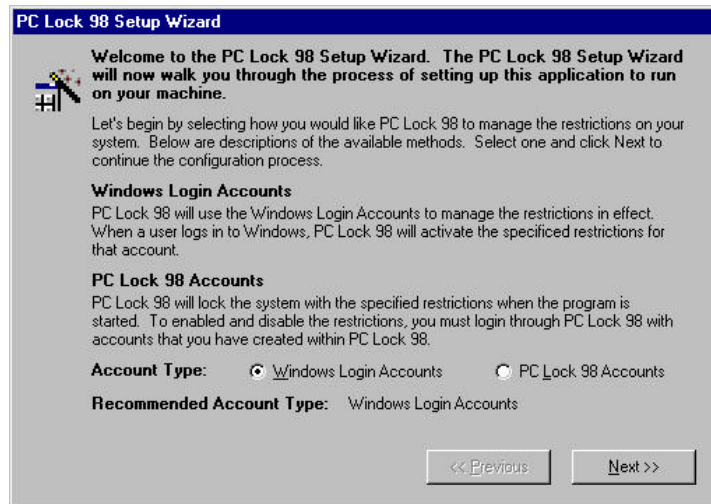
PC Lock 98 v3.03 Instruction Manual
Last Revision Date: January 13, 1999

Configuring PC Lock 98 / Setup Wizard

When you run PC Lock 98 for the first time, the Setup Wizard will be loaded to help you configure the program for use on your system. The first screen of the Setup Wizard will appear and you can begin the configuration process.

Account Type

The first step in configuring PC Lock 98 is to select the type of accounts you want PC Lock 98 to use for managing the restrictions on your system.



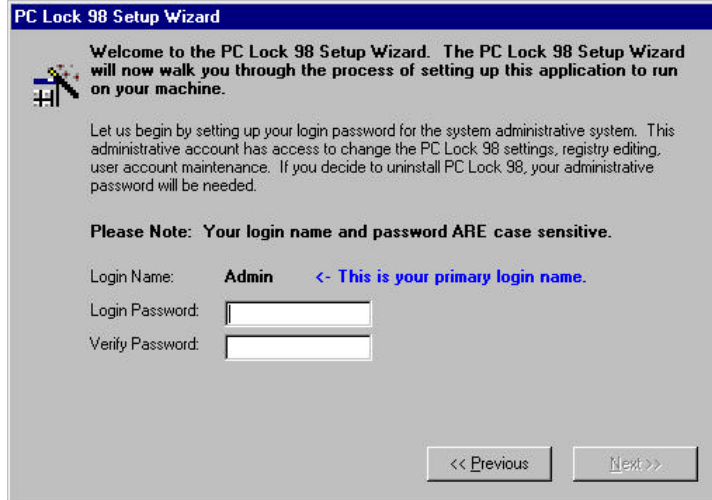
Windows Login Account: If you use the Windows Login Accounts to control your restrictions, PC Lock 98 will control the restrictions in effect based upon the user who has logged into the system through the Windows Login dialog at startup. Using Windows account to manage your restrictions is recommended as this eliminates the need to reboot your system to refresh the restrictions. To change the current restrictions, you can log out as the current user and login with a different name and password. **Note:** The Windows Login Accounts option will only be enabled if you have Windows configured for multiple login accounts. See Appendix A: Enabling Windows 95/98 User Profiles for information on configuring your system to use multiple Windows users.

PC Lock 98 Accounts: PC Lock 98 Accounts are the original method that PC Lock 98 used to manage the restrictions in effect on your system. If you use PC Lock 98 Accounts, you can create different accounts within the application. You can use these accounts to log into PC Lock 98 and set your restrictions. Using PC Lock 98 accounts may require you to reboot your system to notice the restriction changes as Windows refreshes on startup.

Recommended Account Type: If Windows is already configured for multiple users and at least two user names are detected on your system, PC Lock 98 will recommend that you use Windows Login Accounts. Otherwise, PC Lock 98 Accounts will be recommended.

Password Configuration **(PC Lock 98 Accounts Only)**

Now, you must set up your password for the administrative account. The login name for this account is **Admin** by default and can not be changed. This “Admin” account can later be used to configure PC Lock 98 and uninstall PC Lock 98. Once you have entered your password in both fields, click the **Next >>** button to continue. **Note: Your login names and passwords ARE case sensitive.**

The image shows a screenshot of the 'PC Lock 98 Setup Wizard' window. The title bar is blue with white text. The main area has a light gray background. At the top left is a small icon of a key and a padlock. The text reads: 'Welcome to the PC Lock 98 Setup Wizard. The PC Lock 98 Setup Wizard will now walk you through the process of setting up this application to run on your machine.' Below this is a paragraph: 'Let us begin by setting up your login password for the system administrative system. This administrative account has access to change the PC Lock 98 settings, registry editing, user account maintenance. If you decide to uninstall PC Lock 98, your administrative password will be needed.' A bold note follows: 'Please Note: Your login name and password ARE case sensitive.' Then, there are three labels: 'Login Name:' followed by the text 'Admin' and a blue link '<- This is your primary login name.'; 'Login Password:' followed by an empty text box; and 'Verify Password:' followed by another empty text box. At the bottom right are two buttons: '<< Previous' and 'Next >>'.

PC Lock 98 Setup Wizard

Welcome to the PC Lock 98 Setup Wizard. The PC Lock 98 Setup Wizard will now walk you through the process of setting up this application to run on your machine.

Let us begin by setting up your login password for the system administrative system. This administrative account has access to change the PC Lock 98 settings, registry editing, user account maintenance. If you decide to uninstall PC Lock 98, your administrative password will be needed.

Please Note: Your login name and password ARE case sensitive.

Login Name: **Admin** <- This is your primary login name.

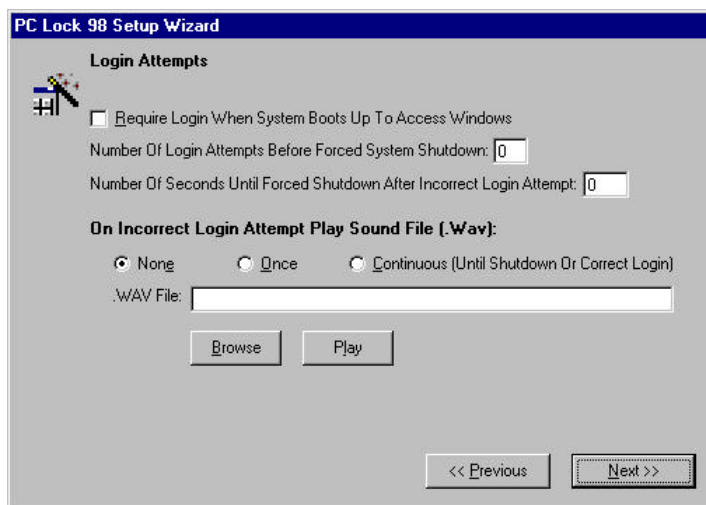
Login Password:

Verify Password:

<< Previous Next >>

Login Attempts **(PC Lock 98 Accounts Only)**

The next step in the configuration process allows you to force Windows to shutdown when an unauthorized user is detected attempting to login in, and you can set the sound file and duration of play to alert you when an unauthorized user is detected. If continuous play is enabled, the sound file will continue to play until a user successfully logs in with a valid username and password.



When you enabled the “Require Login When System Boots Up To Access Windows”, the forced login window will be loaded. When displayed, this login window blocks the user from switching to any application, the start menu, and the desktop. Once a valid login name and password are entered, the PC Lock 98 system will minimize back down to the system tray and will remain unlocked until instructed to lock again.

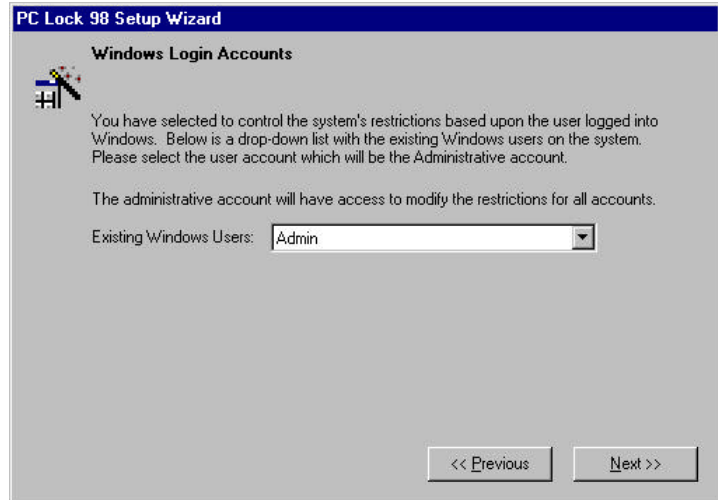


If you would like to display this login window to secure your system, as you may take a break or such, select the “Lock To Forced Login” option from the pop-up menu. You can also display it by bringing up the standard login box, then hold down the Shift key and click with your Right mouse button over the “Login” button. This will unload the login window and bring up the forced login window.

Administrative Account **(Windows Login Accounts Only)**

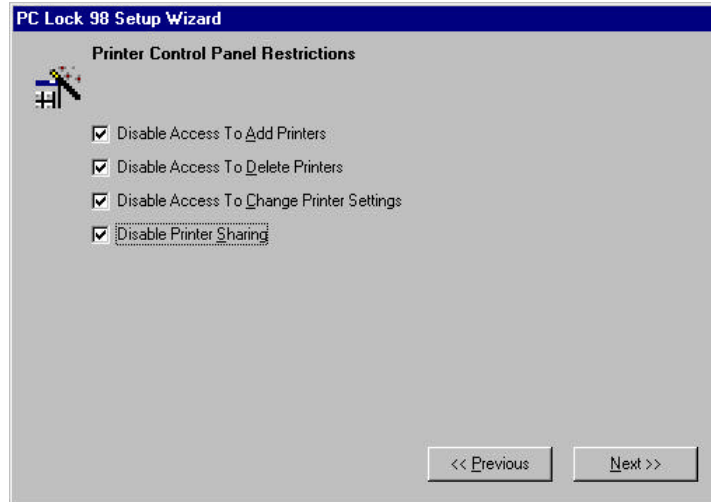
If you selected to have PC Lock 98 control restrictions with the Windows Login Accounts, you will need to select which user name will have the “administrative access” to the system.

When you login into windows with the user account you select, PC Lock will have all restrictions removed from the system allowing full access. You will also be able to access the Setup Wizard and User Editor with the PC Lock 98 icon in the system tray while you are logged in with this account.



Printer Restrictions

Now you will begin setting up the various restrictions you wish to place into effect on your system. We will begin by setting restrictions related to printer access.



Disable Access To Add Printer: This option will disable access to add printers to your system configuration. If a user tries to install a new printer to your configuration, they will be notified that this option has been disabled by their system administrator.

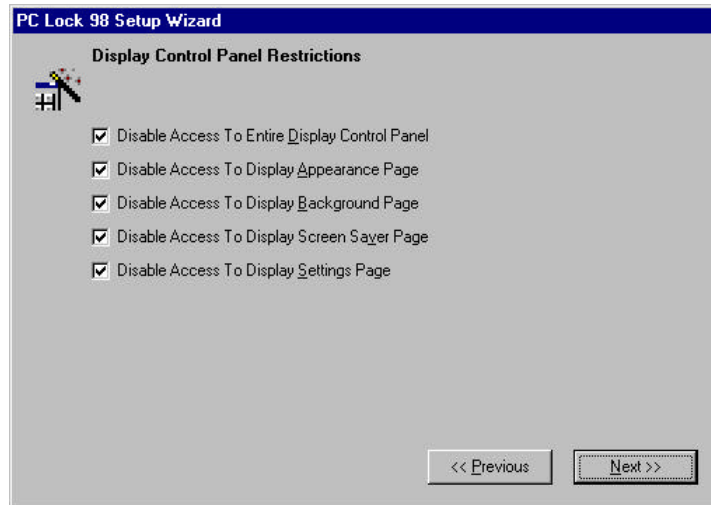
Disable Access To Delete Printers: When enabled, this option will not allow a user of your system to delete an existing printer. Upon trying to delete an existing printer, they will be notified that this option has been disabled by their system administrator.

Disable Access To Change Printer Settings: Enabling this option will not allow the user of your system to access and change any of the settings related to printers currently installed into your system configuration. Upon trying to access the printer settings, they will be notified that this option has been disabled by their system administrator.

Disable Printer Sharing: If enabled, this option will disable local printers from being shared across your network.

Display Restrictions

The next step in configuring restrictions on your system are the Display Restrictions.



Disable Access To Entire Control Panel: This option will disable access to all display control panel pages. The user will be unable to access Screen Saver settings, Appearance, Background, etc. If a user tries to access any display settings, they will be notified that this option has been disabled by their system administrator.

Disable Access To Display Appearance Page: When enabled, this option will disable access to the Appearance Page of the Display Control Panel. Other display control panel pages will be accessible if access is not denied. Upon access the Display Control Panel, the Appearance Tab will not be accessible.

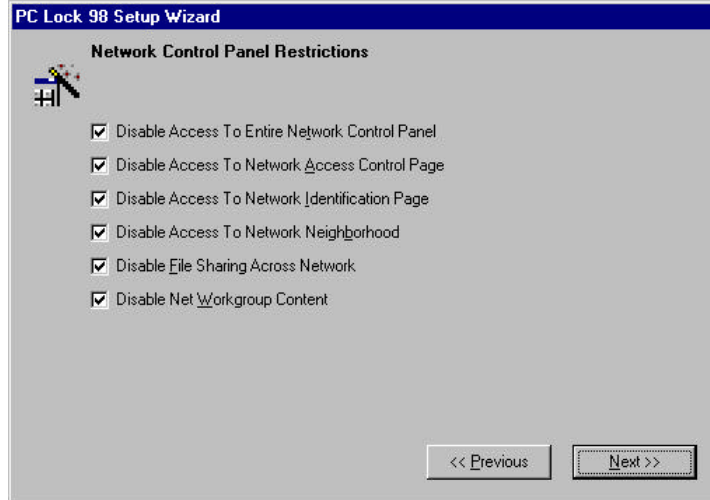
Disable Access To Display Background Page: When enabled, this option will disable access to the Background Page of the Display Control Panel. Other display control panel pages will be accessible if access is not denied. Upon access the Display Control Panel, the Background Tab will not be accessible.

Disable Access To Display Screen Saver Page: When enabled, this option will disable access to the Screen Saver Page of the Display Control Panel. Other display control panel pages will be accessible if access is not denied. Upon access the Display Control Panel, the Screen Saver Tab will not be accessible.

Disable Access To Display Settings Page: When enabled, this option will disable access to the Settings Page of the Display Control Panel. Other display control panel pages will be accessible if access is not denied. Upon access the Display Control Panel, the Settings Tab will not be accessible.

Network Restrictions

After configuring your display restrictions, we will configure your Network Control Panel Restrictions.



Disable Access To Entire Network Control Panel: This option will disable access to all network control panel pages. The user will be unable to access Access Control, Identification, etc. If a user tries to access any network settings, they will be notified that this option has been disabled by their system administrator.

Disable Access To Network Access Control Page: When enabled, this option will disable access to the Access Control Page of the Network Control Panel. Other network control panel pages will be accessible if access is not denied. Upon access the Network Control Panel, the Access Control Tab will not be accessible.

Disable Access To Network Identification Page: When enabled, this option will disable access to the Identification Page of the Network Control Panel. Other network control panel pages will be accessible if access is not denied. Upon access the Network Control Panel, the Identification Tab will not be accessible.

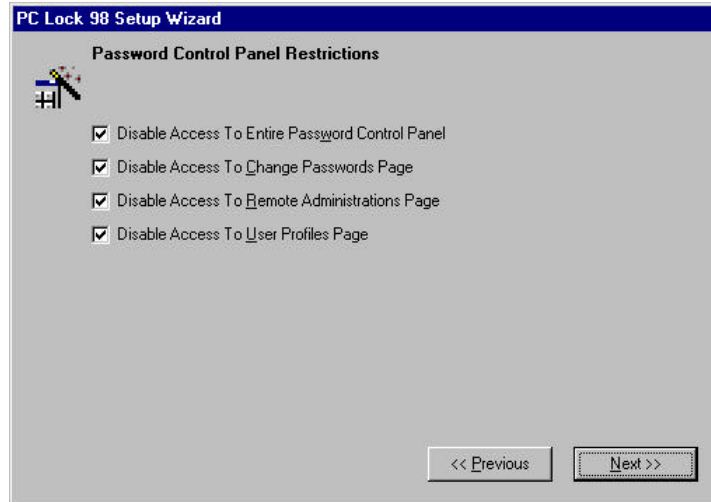
Disable Access To Network Neighborhood: When enabled, this option will disable all icons in Network Neighborhood. This will disable access to roam around network paths.

Disable File Sharing Across Network: When enabled, this option will disable local file sharing to other PCs across your network.

Disable Net Workgroup Content: When enabled, this option will hide computers in the same workgroup as your system from Network Neighborhood.

Password Restrictions

The next restriction option lets you disable the Password Panel located inside of the Control Panel.



Disable Access To Entire Password Control Panel: This option will disable access to all password control panel pages. The user will be unable to access Change Passwords, Remote Administrations, etc. If a user tries to access any password settings, they will be notified that this option has been disabled by their system administrator.

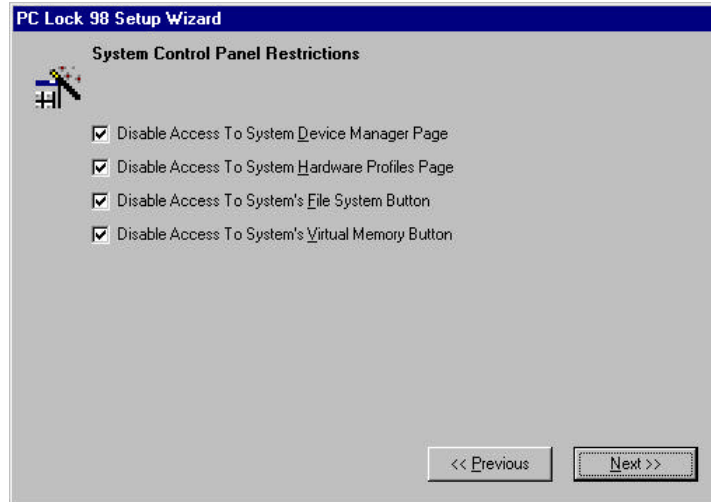
Disable Access To Change Passwords Page: When enabled, this option will disable access to the Change Passwords Page of the Password Control Panel. Other password control panel pages will be accessible if access is not denied. Upon access the Password Control Panel, the Change Passwords Control Tab will not be accessible.

Disable Access To Remote Administrations Page: When enabled, this option will disable access to the Remote Administrations Page of the Password Control Panel. Other password control panel pages will be accessible if access is not denied. Upon access the Password Control Panel, the Remote Administrations Control Tab will not be accessible.

Disable Access To User Profiles Page: When enabled, this option will disable access to the User Profiles Page of the Password Control Panel. Other password control panel pages will be accessible if access is not denied. Upon access the Password Control Panel, the User Profiles Tab will not be accessible.

System Restrictions

The next restriction option lets you disable the System Control Panel located inside of the Control Panel.



Disable Access To System Device Manager Page: This option will disable access to the Device Manager Page located in System through the Control Panel. If a user tries to access the System Panel, they will be unable to access the Device Manager Tab.

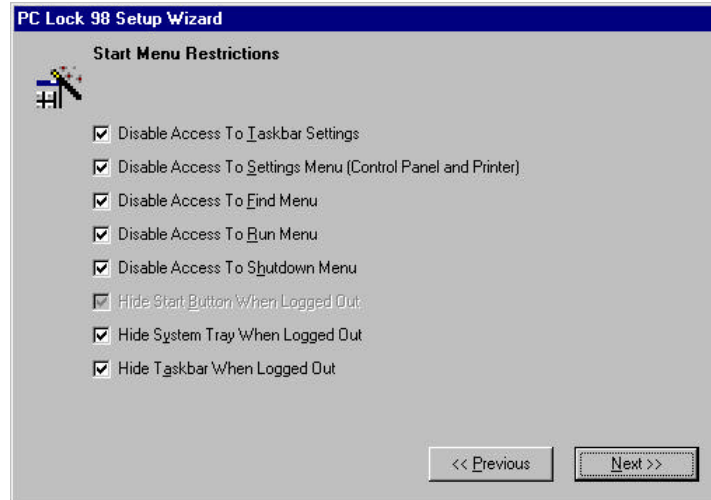
Disable Access To System Hardware Profiles Page: This option will disable access to the Hardware Profiles Page located in System through the Control Panel. If a user tries to access the System Panel, they will be unable to access the Hardware Profiles Tab.

Disable Access To System's File System Button: This option will disable access to the File System Button located in System through the Control Panel. If a user tries to access the System Panel, they will be unable to access the File System Button.

Disable Access To System's Virtual Memory Button: This option will disable access to the Virtual Memory Button located in System through the Control Panel. If a user tries to access the System Panel, they will be unable to access the Virtual Memory Button.

Start Menu Restrictions

The next group of restrictions allow you to disable different aspects of the Start Button located on the Task Bar.



Disable Access To Taskbar Settings: This option will disable access to the Taskbar option located under Settings. Disabling this will disable access to change the taskbar settings.

Disable Access To Settings Menu (Control Panel and Printer): This option will remove the Settings options from Start Button disabling access to Control Panel, Printer Settings, and Taskbar.

Disable Access To Find Menu: This option will disable access to the Find option on the Start Button. The user of your system will be unable to use this option to search the hard drive. If a users tries to access this when it is disables, they will be notified that it has been disabled by their system administrator.

Disable Access To Run Menu: This option will disable access to the Run option on the Start Button. The user of your system will be unable to use this option to type in a command line and execute a file. If a users tries to access this when it is disables, they will be notified that it has been disabled by their system administrator.

Disable Access To Shut Down Menu: This option will disable access to the Shut Down option on the Start Button. The user of your system will be unable to use this option to shut down the computer. If a users tries to access this when it is disables, they will be notified that it has been disabled by their system administrator.

Hide Start Button When Logged Out: This option will hide the Start Button from the Task Bar when PC Lock 98 is in “Locked” Mode. Upon successfully logging back into PC Lock 98, the start button will re-appear. **Note:** If you enabled the “Hide Taskbar When Logged Out” option, the Hide Start Button option will be enabled and locked to ensure the user can not access the start button while the system is locked.

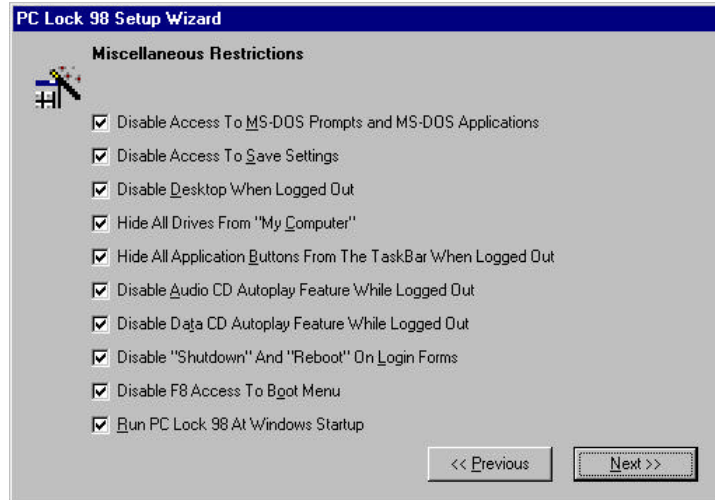
Start Menu Restrictions (Continued)

Hide System Tray When Logged Out: This option will hide the System Tray from the Task Bar when PC Lock 98 is in “Locked” Mode. Upon successfully logging back into PC Lock 98, the System Tray will re-appear. **Note:** If this option is enabled, PC Lock 98 will be unable to minimize to the System Tray. PC Lock 98 will automatically load and display the password login box. The password box does not remain on top and can be covered up with other existing application windows. The login dialog will not unload until a successful login is detected.

Hide Taskbar When Logged Out: This option will hide the Task Bar when PC Lock 98 is in “Locked” Mode. Upon successfully logging back into PC Lock 98, the Taskbar will re-appear. **Note:** If this option is enabled, PC Lock 98 will be unable to minimize to the System Tray. PC Lock 98 will automatically load and display the password login box. The password box does not remain on top and can be covered up with other existing application windows. The login dialog will not unload until a successful login is detected.

Miscellaneous Restrictions

The next group of restrictions will allow you to disable a few miscellaneous restrictions.



Disable Access To MS-Dos Prompts and MS-Dos Applications: This option will disable access to anything that needs a Dos Prompt. The user of your system will be unable to access a dos prompt or run any program that requires a dos prompt.

Disable Access To Save Settings: This option will disable Save Settings. Upon shutting down your system, Windows remembers things like what windows are open and where icons are located. Disabling this will disable the save settings options so when Windows is shut down, Windows will not “memorize” where things are incase the user messes things up.

Disable Desktop When Logged Out: This option will disable all of the icons on the Desktop as well as stop the user from accessing any of the desktop properties by “Right-Clicking” on the desktop. Upon PC Lock 98 going into “Locked” Mode, the desktop will disappear. To bring the desktop back, simply log into PC Lock 98 with a valid login name and password.

Hide All Drives From “My Computer”: This option will hide all drives from my computer.

Hide All Application Buttons From The Taskbar When Logged Out: This option will hide all application buttons for any running programs from the taskbar while logged out.

Disable Audio CD Autoplay Feature While Logged Out: While the system is locked, this option will disable the Autoplay feature for Audio CDs. When an audio CD is inserted and this option is selected, it will not autoplay automatically.

Disable Data CD Autoplay Feature While Logged Out: While the system is locked, this option will disable the Autoplay feature for Data

CDs. When a data CD is inserted and this option is selected, it will not autoplay automatically.

Disable F8 Access To Boot Menu: This option will disable the ability for a user to press the F8 key and access the boot menu when the system is booting up and displays “Starting Windows 9x . . .”. If you have enabled this option and would like to reboot the system with access to the boot menu, you must log into the system/PC Lock 98 with your “administrative account”, select the “Exit” option from the popup menu to unload the PC Lock 98 software, and then reboot the system. Access to the boot menu will be available until PC Lock 98 runs again.

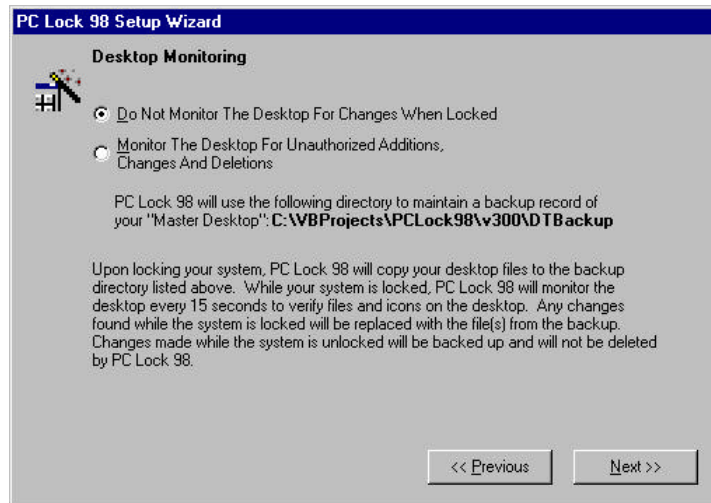
Run PC Lock 98 At Startup: This option will instruct Windows 95 to run the PC Lock 98 program when Windows 95 starts up. This will help ensure that the restrictions you want in place actually take effect each time the machine is turned on. **Note:** This option will be enabled and locked enabled if you select the option to require login at startup.

Desktop Monitoring

When desktop monitoring is enabled, PC Lock 98 will monitor files and links on your desktop every 15 seconds. When you enable monitoring in the Setup Wizard, PC Lock 98 will make a backup copy of your desktop files to the directory specified.

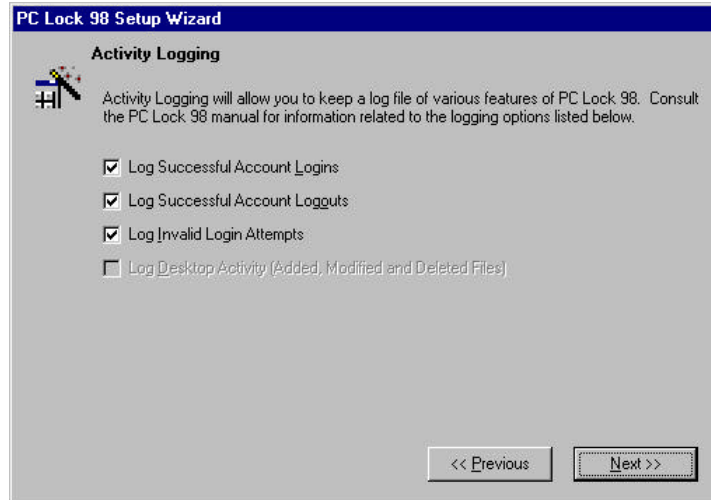
This directory is used as your “Master Desktop”. PC Lock 98 will compare files and links on your desktop against these files. If a new, changed or deleted file/link is detected on the desktop, PC Lock 98 will restore the desktop back to it’s original file set by adding, changing and deleting files to reflect the “Master Desktop”.

New, changed and deleted files/links modified while PC Lock 98 is in “unlocked mode” with the Admin account will be backed up to the master desktop directory allowing the Admin user to make changes. When you re-lock the system, PC Lock 98 will begin monitoring the desktop files from the updated Master Desktop.



Activity Logging **(PC Lock 98 Accounts Only)**

Activity logging will allow you to monitor certain aspects of the PC Lock 98 software if you are using PC Lock 98 Accounts to control your restrictions. If used, PC Lock 98 will maintain a log file of the options you choose to monitor. You can view and delete the log file from the popup menu while logged in with the administrative account.



Log Successful Account Logins: PC Lock 98 will make an entry to the log file every time a user successfully logs into the PC Lock 98 dialog.

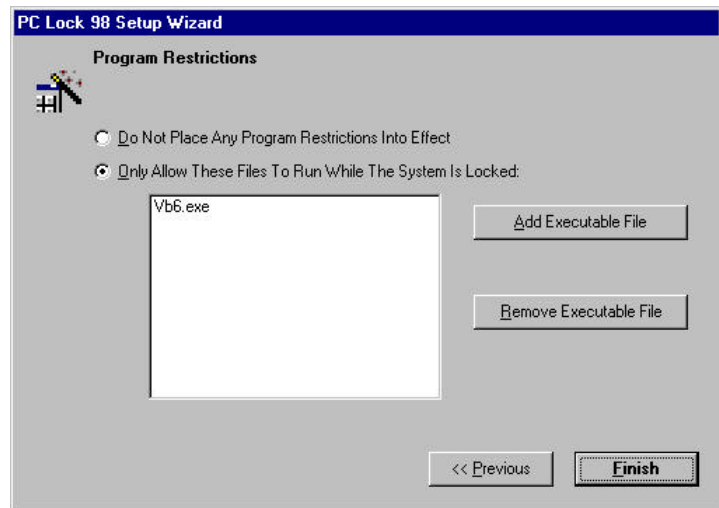
Log Successful Account Logouts: PC Lock 98 will make an entry to the log file every time a user successfully logs out of the PC Lock 98 software.

Log Invalid Login Attempts: PC Lock 98 will make an entry to the log every time a user attempts to log into the PC Lock 98 software but is unsuccessfully. PC Lock 98 will record the username and password that they tried to use.

Log Desktop Activity: PC Lock 98 will make an entry to the log file every time a file has been modified on the desktop. **Note:** You must be using the Desktop Monitoring feature of PC Lock 98 to use this logging feature.

Program Restrictions

By placing program restrictions into effect, you are telling Windows 95 that you only want to allow certain programs to be run when PC Lock 98 is in “Locked” Mode. Upon being “Unlocked”, any programs contained in the system will be allowed to run.

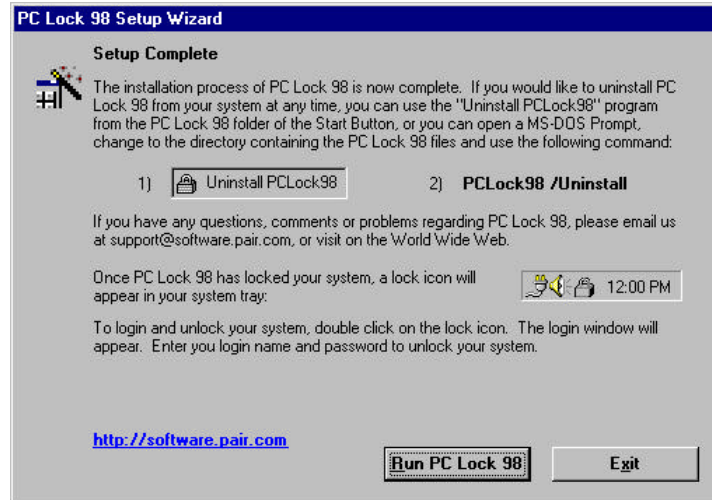


If you desire to place program restrictions into effect, enable the option “Only Allow These Files To Run While The System Is Locked”. You may now add files to the restriction list by clicking on the “Add Executable File” button. A file window will appear. Search through your hard drive and locate the executable file you want to allow access to. Only the executable files you list will be allowed to run. **Please search through your hard drive to file the executable files. Do not type in the file names as they must be entered to the correct specifications. Searching through your hard drive and actually locating the file ensures it will be correctly registered.**

Installation Complete

The process of configuring PC Lock 98 is now complete. You may Run PC Lock 98 at this time or Exit the Setup Wizard and run it at a later time. **If you are using PC Lock 98 accounts, please be sure to note at the bottom of the form your login name and password.**

Also keep in mind that they are case sensitive and must be entered exactly as they appear.



Notice (PC Lock 98 Accounts Only)

PC Lock 98 uses the Windows system policies to create the restrictions described. Rebooting your system may be required to lock/unlock certain restrictions as Windows does not refresh these, except during the boot process. If you have placed restrictions into effects, and they do not appear to be operating as described, reboot your system and allow Windows to update itself as to the restrictions you have chosen.

Logging Into PC Lock 98 (PC Lock 98 Accounts)

PC Lock 98 places a lock icon in the system tray of your task bar. Placing your mouse over the icon will tell you the status of PC Lock 98: “PC Lock 98 – Locked” or “PC Lock 98 – Unlocked”.

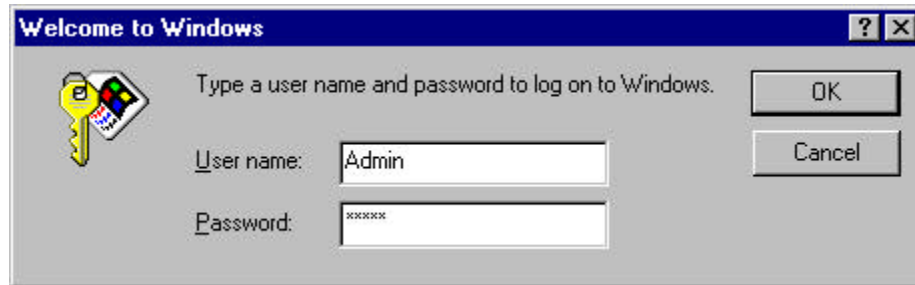


When PC Lock 98 is in “Locked” mode, double click on the lock icon to bring up the login windows. From here you can type in your login name and password to unlock the system.

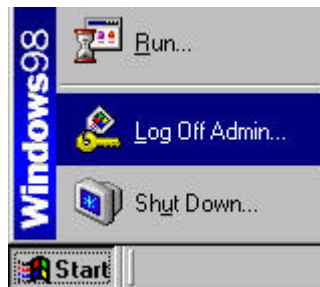
Once PC Lock 98 is “Unlocked”, you can do two things with the icon in the system tray: 1) Click with your mouse button once on the icon and a menu will appear with options related to PC Lock 98. 2) Double click on the icon will automatically log you out of the program and place the system back in locked mode. **Note: When logging into PC Lock 98 with an account that was created using the User Profile Editor, the user will only have access to the “Lock” options on the menu. To access all of the other features of the menu, you must be logged into PC Lock 98 with the Administrative Account (Admin).**

Logging Into PC Lock 98 (Windows Login Accounts)

If you are using the Windows Login Accounts to control the restrictions on your system, all you need to do is login in through the Windows dialog with the username and password. Assuming that you set PC Lock 98 to run at startup, PC Lock 98 will run and set the restrictions for the username that you have successfully logged in with.



If you would like to log out from the current username and login in with a different username to change the restrictions that are in effect, you do not need to shut the system down. Simply select the Logoff option on the start menu. This will log out the current user and the dialog box will appear again prompting you for your username and password.



Popup Menu Options:

Lock System: This option will log you out of PC Lock 98 and place the system back into “Locked” Mode.

Lock System To Blue Login Screen: This option will log you out of PC Lock 98 and load the Blue Login Screen. Login is required to access any portion of the system. The Blue Login Screen blocks access from accessing other applications and Windows features such as the taskbar, start menu, etc.

Reboot System Without Restrictions: This option will reboot your system one (1) time without loading the restrictions on that boot only. This will allow you to reboot your system and to have all “locked” options appear. The next time the system is rebooted, PC Lock 98 will automatically reboot loading the restrictions into place.

Change Settings: This option will bring up the Setup Wizard and allow to you change the restrictions you have in place on your system.

User Profile Editor: This option will load the User Profile Editor. The User Profile Editor is used to create multiple login names and password for use with PC Lock 98. Different restrictions can be set to each account.

Exit: This option will unload the PC Lock 98 program and leave your PC in “unlocked” mode.

Uninstalling PC Lock 98

Once you have installed PC Lock 98 onto your system, the InstallShield setup will add PC Lock 98 to the control panel's "Add/Remove Programs" option; however, upon running the software for the first time PC Lock 98 will automatically remove itself from the "Add/Remove Programs" list as a safety feature.

To uninstall PC Lock 98, simply select the option "Uninstall PC Lock 98" from the Start Button.



If this icon was not added during the installation process, simply use the following DOS Command Prompt:

Change to the directory containing the PC Lock 98 software. The default installation directory is c:\Program Files\PCLock98.

Command Line: **PCLock98 /Uninstall**

If you are using Windows Login Accounts to control your restrictions, you will need to be logged in with the accounts that has administrative access in order to begin the uninstallation process. If you configured PC Lock 98 to use "PC Lock 98 Account" to control your restrictions, you will be prompted to enter the password for your "Admin" account.

After you have initiated the uninstallation process, PC Lock 98 will remove any restrictions in effect on the system and will remove all of its entries in the system registry. Next, PC Lock 98 will run the unInstallShield application to remove all of the program files from your system. This is the application which would normally have been run if you were to select it from the control panel's "Add/Remove Programs" icon.

PC Lock 98 Frequently Asked Questions (F.A.Q.)

- Q: Does the Registration of PC Lock 98 include all future updates free of charge?
- A: Yes. All future releases of PC Lock 98 are free of charge. Registered users will be notified via the email address on record with us of any updates to the program, as well as a new registration code, should their code change. **Note:** Upgrades are free to site license users; however, site license users may be required to pay a small fee to receive a new site license version on CD-Rom.
- Q: Is PC Lock 98 compatible with Windows NT?
- A: No. PC Lock 98 is designed for use on systems running Windows 95 or 98. PC Lock 98 should not be used on systems running Windows NT. Running PC Lock 98 under the Windows NT environment is done so at your own risk.
- Q: I have forgotten my login name and/or password and am unable to log in. Can you help me recover my password and log back in?
- A: Yes. We offer password recovery free of charge to registered users. If you are a registered user of PC Lock 98 and need assistance with this matter, please email us and we will be glad to assist you. We are unable to offer password recovery to unregistered PC Lock 98 users.
- Q: I have disabled access to the Control Panel and Printer. I am unable to access them from the Start Menu; however, I can still access them from "My Computer". What should I do?
- A: Reboot your system with PC Lock 98 in locked mode. When Windows refreshes upon boot-up, it will pick up the restrictions and remove the Control Panel and Printers icons from "My Computer".
- Q: I have logged into PC Lock 98 and have successfully unlocked the program; however, some restrictions are still in place and I am unable to access these features.
- A: Some of the Windows policies require that you reboot in order to update the status of the restrictions. Reboot your system while PC Lock 98 is unlocked. Upon Windows rebooting, should PC Lock 98 run at startup, immediately log back into PC Lock 98. Once you have rebooted and PC Lock is in unlocked mode again, all restrictions should be removed. If you have waited awhile after Windows reboots to login into PC Lock, the restrictions PC Lock 98 sets will be picked up by Windows.

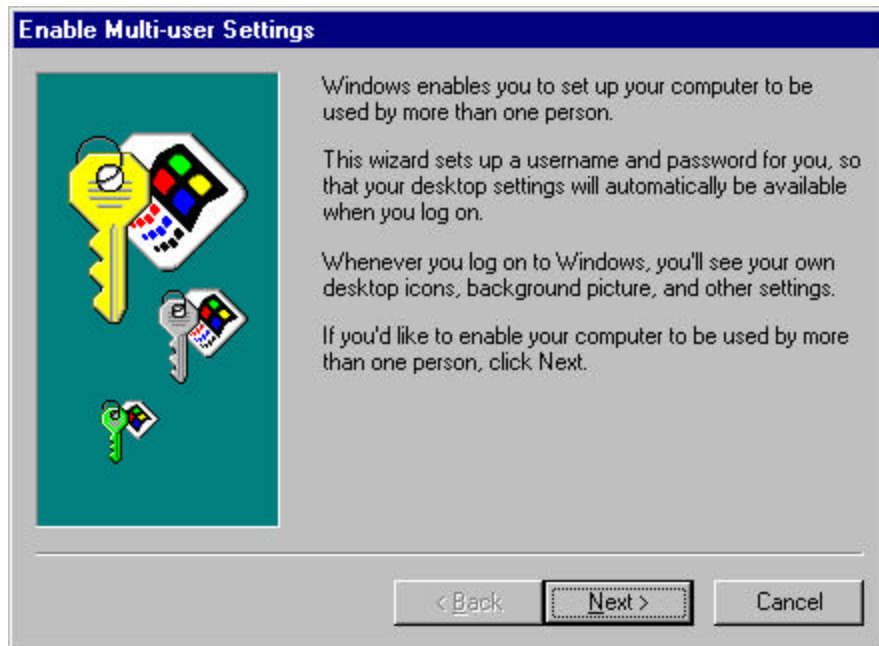
Appendix A

Enabling Windows 95/98 User Profiles

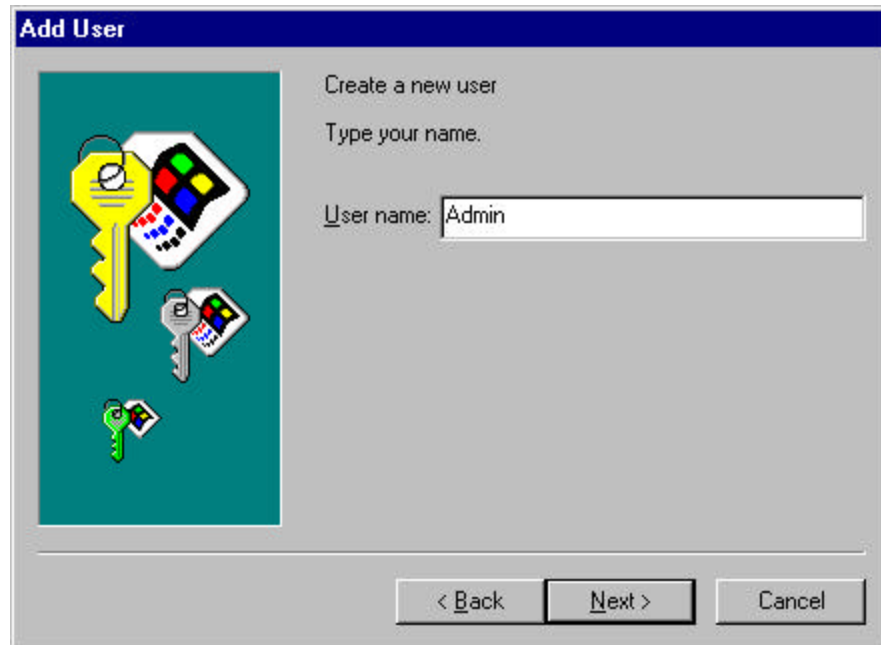
If you want PC Lock 98 to control the Windows Restrictions based upon which Windows User Profile is logged into the system, you will need to enable multiple user accounts in Windows 95/98. To enable multiple users, open the Windows Control Panel and select the “Users” icon:



If your system is currently not configured for multiple accounts, Windows will display a wizard to assist you in configuring your system for multiple user accounts:



The next screen of the multi-user wizard prompts you to enter a user name. PC Lock 98 recommends that you create your “administrative” account at this time. Enter the user name that you would like to use for complete access to your system. When logged in with this account, all Windows restrictions will be unlocked and access to the PC Lock 98 configuration wizard will be available.



The 'Add User' dialog box has a blue title bar. On the left is a teal square containing three keys: a large yellow one, a medium silver one, and a small green one, each with a different colored Windows logo. The main area is light gray. It contains the text 'Create a new user' and 'Type your name.' followed by a text box labeled 'User name:' with the word 'Admin' entered. At the bottom are three buttons: '< Back', 'Next >', and 'Cancel'.

Add User

Create a new user

Type your name.

User name:

< Back Next > Cancel

Next, you will be prompted to enter the password you want to use for this account. **Important:** Do not forget the login name and password for this account. This account is the only one that has access to unlock all restrictions and to the PC Lock 98 configuration. Your password can not be recovered when using Windows User Profiles.



The 'Enter New Password' dialog box has a blue title bar. On the left is the same teal square with three keys as the previous dialog. The main area is light gray. It contains the text 'Type a password (optional)' and 'Type the password you want to use into both boxes below. This will be your password to log on to Windows.' followed by two text boxes labeled 'Password:' and 'Confirm password:'. Both boxes contain 'xxxxxx'. At the bottom are three buttons: '< Back', 'Next >', and 'Cancel'.

Enter New Password

Type a password (optional)

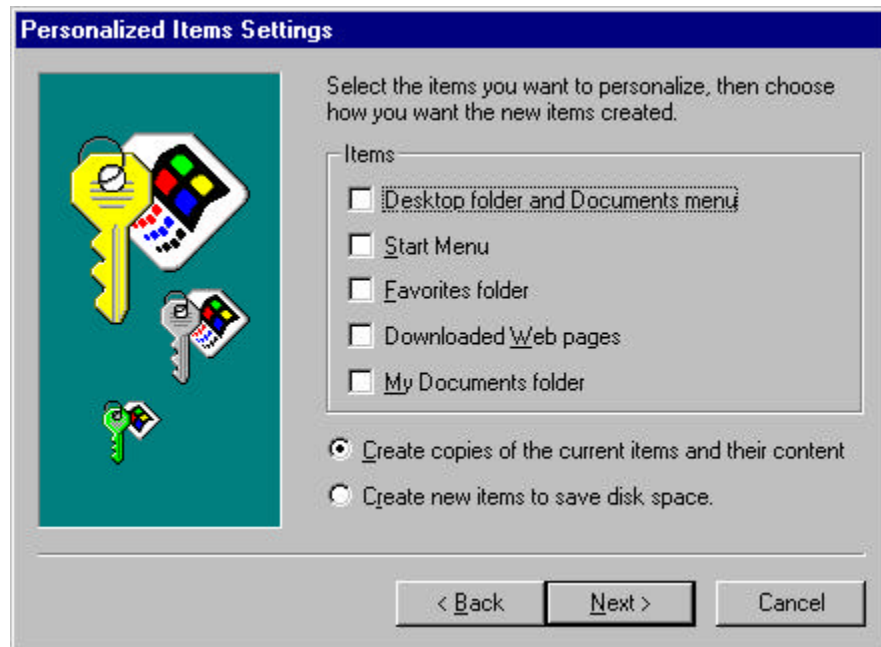
Type the password you want to use into both boxes below. This will be your password to log on to Windows.

Password:

Confirm password:

< Back Next > Cancel

The next screen of the setup wizard allows you to select various options that you want Windows to customize for each login name. For further information regarding these options, please consult your Windows software manual or help file.



Finally, the last screen of the multi-user setup wizard will inform you about the changes to your system that are about to take effect. Click the “Finish” button to finalize the multi-user configuration. Windows will now ask to reboot your system so that the changes can take effect. You will be able to create and configure additional login accounts later, if desired.



PC Lock 98 Revision History

Created: July 11, 1998

Last Modified: January 13, 1999

- 01-13-1999 **Released PC Lock 98 version 3.03**
- Fixed: Display and Network restrictions not removing for sub accounts
- 11-20-1998 **Released PC Lock 98 version 3.01**
- Fixed: Restrictions not taking effect because registry key non-existent
- 10-20-1998 **Released PC Lock 98 version 3.00**
- Removed: Use of wnostray.ocx for system tray icon control – system tray icon functionality now built directly into PC Lock 98
 - Added: Ability to control restrictions based upon which Windows User Profile is logged in.
 - Added: Disable F8 Access To Boot Menu
- 09-24-1998 **Released PC Lock 98 version 2.33**
- Removed: PC Lock 98 blocking of access to Task List (Control-Alt-Del)
 - Added: PC Lock 98 registers itself as a service process and can not be terminated with Control-Alt-Del
- 08-06-1998 **Released PC Lock 98 version 2.32**
- Added: Floating PC Lock 98 application bar allowing access to login box when System Tray or Taskbar are hidden. (Replaced login box automatically loading)
- 07-26-1998 **Released PC Lock 98 version 2.31**
- Fixed: Only Admin account could log
 - Fixed: If taskbar hidden, taskbar would remain hidden when PC Lock 98 was logged into by a secondary account (non-Admin)
 - Added: Option to restart the system without loading PC Lock 98 Restrictions at startup
- 07-11-1998 **Released PC Lock 98 version 2.30**
- Added: Blue login screen requiring login to allow further access
 - Added: Option to require login with blue login screen on Windows boot
 - Added: Option to shutdown system after x number of incorrect logins
 - Added: Option to shutdown system after x seconds of an incorrect login
 - Added: Option to play .WAV file upon incorrect login attempt
 - Fixed: Control-Esc used to bring up start button when taskbar hidden
 - Removed: System recovery disk creation and validation functions
 - Added: Built in options for password recovery



PC Lock 98 v3.01 Ordering Instructions – (RegNow.Com #1066-3)

Thank you for your interest in ordering PC Lock 98. PC Lock can currently be ordered via one of three methods: 1) Check/Money Order; 2) Credit Card by Fax; 3) Credit Card online by Secure Server. Listed below you will find instructions on how to purchase PC Lock 98 using each of these instructions. If you have any questions, please email us at sales@software.pair.com.

Ordering By Check or Money Order

To purchase PC Lock 98 by check or money order, please complete the order form that was printed. Please allow up to 2 or 3 weeks for delivery of your registration code. **Make your check or money order payable to Russell Anderson** and mail your completed order form and payment to the following address:

Software.pair.com
P.O. Box 9881
Colorado Springs, CO 80932-9881
USA

For **international orders**, please visit your bank and obtain an international money order payable in US Funds, and drawn from a US Bank Account.

Ordering By Fax

To purchase PC Lock 98 by fax, please complete the order form that was printed. Complete the credit card section of the order form and fax the completed order form to (425) 392-0223. Please allow 48 hours for delivery of your registration code after faxing your order. Your order will appear on your statement as a charge from "Universal Commerce, Inc. / RegNow".

Ordering Online By Secure Server

To purchase PC Lock 98 by Credit Card on the internet, visit our web site at <http://software.pair.com>. You can place your order with your Visa, MasterCard, American Express or Discover (Novus) via our secure server. You will receive a registration code to unlock your trial period within minutes of completing your order at the email you provide when ordering. Your order will appear on your statement as a charge from "Universal Commerce, Inc. / RegNow". The address you provide when ordering must match the address on record with the credit card company to fulfill your order.



PC Lock 98 v3.01 Order Form
(RegNow.Com #1066-3)

Customer Information

First Name: _____ Last Name: _____

Company Name: _____

Address: _____

City: _____ State: _____ Zip Code: _____

County: _____ Phone Number: _____

Email Address: _____

Order Quantity

Registration Code Delivered By Email And Postal Mail (Requires Download From Internet) - \$29.95 USD
Registration Code And Software On 3.5" Disks Delivered By Postal Mail - \$34.95 USD

Quantity: _____ PC Lock 98 Software Licenses* @ \$29.95 USD = _____

Quantity: _____ PC Lock 98 Software By Mail* @ \$34.95 USD = _____

Order Total: \$ _____

*Note: One (1) PC Lock 98 Software License Authorizes Use On One (1) Computer System

Credit Card Payment Information (if applicable)

Name On Credit Card: _____

Credit Card Type (select one): **Visa** **MasterCard** **American Express** **Discover (Novus)**

Credit Card Number: _____ Expiration Date: _____

Please Note: The address listed above must match the billing address on record with the credit card company.

