

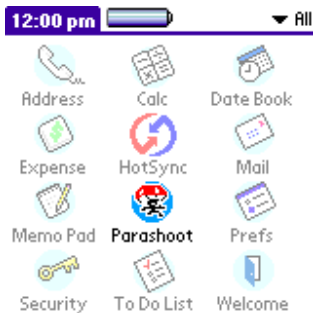


## Palm Computing Platform

### Installation

Parashoot is designed for the Palm Computing Platform. “**parashoot.prc**” should be installed into your handheld device using the instructions provided by the manufacturer. The appropriate display mode (black and white, grayscale or color) will be used when the application is started.

### How to Play



Start Parashoot by tapping on the application icon in the application launcher. After a short while, you will be presented with the main Parashoot screen in which you may select the type of game you wish to play, or setup any configuration options.

There are two types of game play available, game A and B – your choice depends solely on your confidence and skill level. Game A is for beginners, where Game B requires more skill and co-ordination. You can select the game type by tapping on the “**Game A**” or “**Game B**” buttons, or by using a menu command.



Using the hard keys or the stylus, you must position your boat correctly and rescue as many parachuters as you can that have jumped and heading towards a lake full of sharks. You may configure the key and sound volume on the configuration screen. You get to this by selecting the menu item “**Config**” in the “**Game**” menu. Consult your handheld device menu for instructions of selecting a menu item. When a game is active, you may tap the speaker icon at the bottom left of the screen to get to the configuration screen. It is possible to pause the current game in process by tapping the paw icon.



### Registration

Parashoot is shareware, the demonstration version does not allow the player to generate high score codes or save more than 50 parachuters. To access these features, a device identification number is required to generate a unique unlocking registration datafile.



You can get to the registration screen by selecting the menu item “**Register**” in the “**Game**” menu.

To be included in the global high score table (located at <http://www.ardiri.com/>), send an email to [aaron@ardiri.com](mailto:aaron@ardiri.com) with the information shown in the “Register Your Score” dialog. This will only appear if you beat the ‘Internal’ high score for each game type, or if you request it using the menu option under the “**Score**” menu on the main page.