

## London South Bank v2

Freeware Scenery for FS2002  
by Ralph Pegram [rwp.forward@talk21.com](mailto:rwp.forward@talk21.com)

This scenery is an update of my previous release, SE1v1, incorporating some detail changes and new textures based on photographs.

Includes the following prominent South Bank buildings

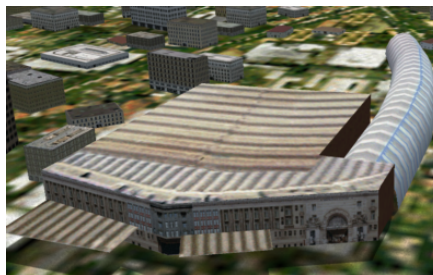
**The London Eye**, a 450ft(137m) diameter wheel with 32 glass capsules, each capable of holding 25 people.



**Shell Centre**, the UK headquarters of Shell International, a 350ft tower and office complex.



**Waterloo Station and Eurostar terminal**, mainline rail terminus serving the south and west of England.



## **ADDING NEW SCENERY TO FS2002**

1. If you already have SE1v1 installed simply overwrite with the new files in SE1v2.zip then go to step 4.
2. If this is a first time installation then you will need to remove the wrongly positioned Millennium Dome scenery first. To do this I recommend that you install Oliver Minchin's scenery CanaryV1.zip which not only removes the Dome but replaces it with a better version in the correct location and adds several other key London buildings in Canary Wharf (this is available from FlightSim.com, search the library under FS2002 Scenery).
3. Unzip SE1v2.zip into the FS2002\ADDON SCENERY folder. A new folder, "London South Bank", will be created automatically for the scenery and texture files.
4. To register the new scenery in FS2002, at the FS2002 Start window select Settings, then Scenery Library. Choose Add Area and browse to the new London South Bank folder. All the scenery will be installed automatically into FS2002.

Create a new flight starting at London City Airport, runway 28. You will take off towards the west, pass the Millenium Dome and fly over Canary Wharf. The Eye should be visible straight ahead.

## **NOTES**

### **Copyright and Disclaimer**

These files are released as Freeware, copyright ©Ralph Pegram. The files in this package may be freely copied and distributed, unmodified and complete, provided that they are not used for profit, either singly or collectively, and that no charge is made for their distribution.

All the files are totally harmless but nevertheless you load them at your own risk. No responsibility is accepted should you believe that they have disrupted your PC, or worse.

The scenery was built using Flight Sim Design Studio Pro.

**Ralph Pegram 29.5.2002**