

AVERAGE VAR 2° W  
DISTANCES IN NM  
ALTITUDES IN FEET  
DIRECTIONS AREMAGNETIC  
23 SPY 304 DME SPY 23 NM  
VOR SPY RADIAL 304

SID  
 VOR RADIAL  
 BEARING

RNAV - EH WAYPOINTS

THR05 N52°09'34" E004°24'14"  
EH170 N52°19'55" E004°25'30"  
EH171 N52°07'05" E004°45'53"  
EH172 N52°12'53" E004°29'41"  
EH173 N52°09'46" E004°38'24"  
EH174 N52°14'38" E004°15'17"  
EH175 N52°07'02" E004°03'07"  
EH176 N52°16'34" E004°26'02"  
EH178 N52°13'33" E004°30'37"  
EH179 N52°10'29" E003°52'38"  
EH180 N52°15'28" E004°19'58"  
EH181 N52°09'55" E004°07'39"  
EH182 N52°12'56" E004°05'56"

TWR	134.150	Valkenburg Tower
	122.100	
APP (TAR)	127.025	Rotterdam
	312.475	Approach O/R
	119.050	Schiphol Approach / Departure
	241.850	O/R - ATC discretion
	121.200	Schiphol Approach / Departure
	281.425	O/R - ATC discretion
	118.400	Schiphol Arrival O/R - ATC discretion
	131.150	Schiphol Arrival O/R - ATC discretion
	126.675	Schiphol Approach O/R - ATC discretion
	121.500	General Emergency
	243.000	in Amsterdam FIR



TWR	134.150 369.725 122.100	Valkenburg Tower
APP (TAR)	127.025 312.475  119.050 241.850  121.200 281.425  118.400  131.150  126.675  121.500 243.000	Rotterdam Approach O/R  Schiphol Approach / Departure O/R - ATC discretion  Schiphol Approach / Departure O/R - ATC discretion  Schiphol Arrival O/R - ATC discretion  Schiphol Arrival O/R - ATC discretion  Schiphol Approach O/R - ATC discretion  General Emergency in Amsterdam FIR



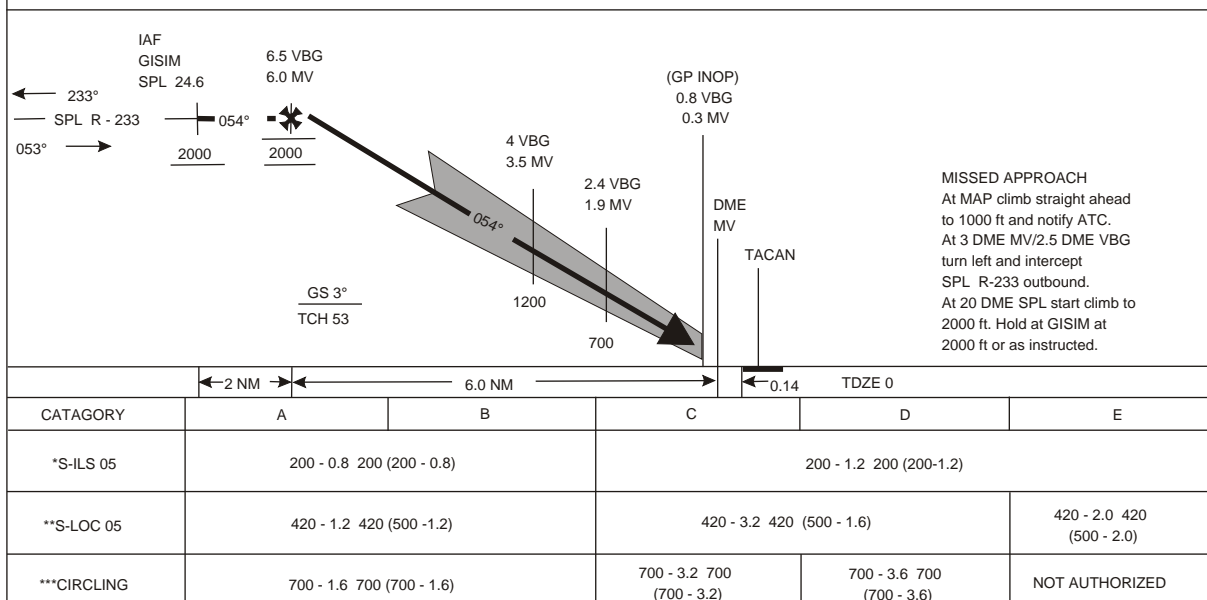
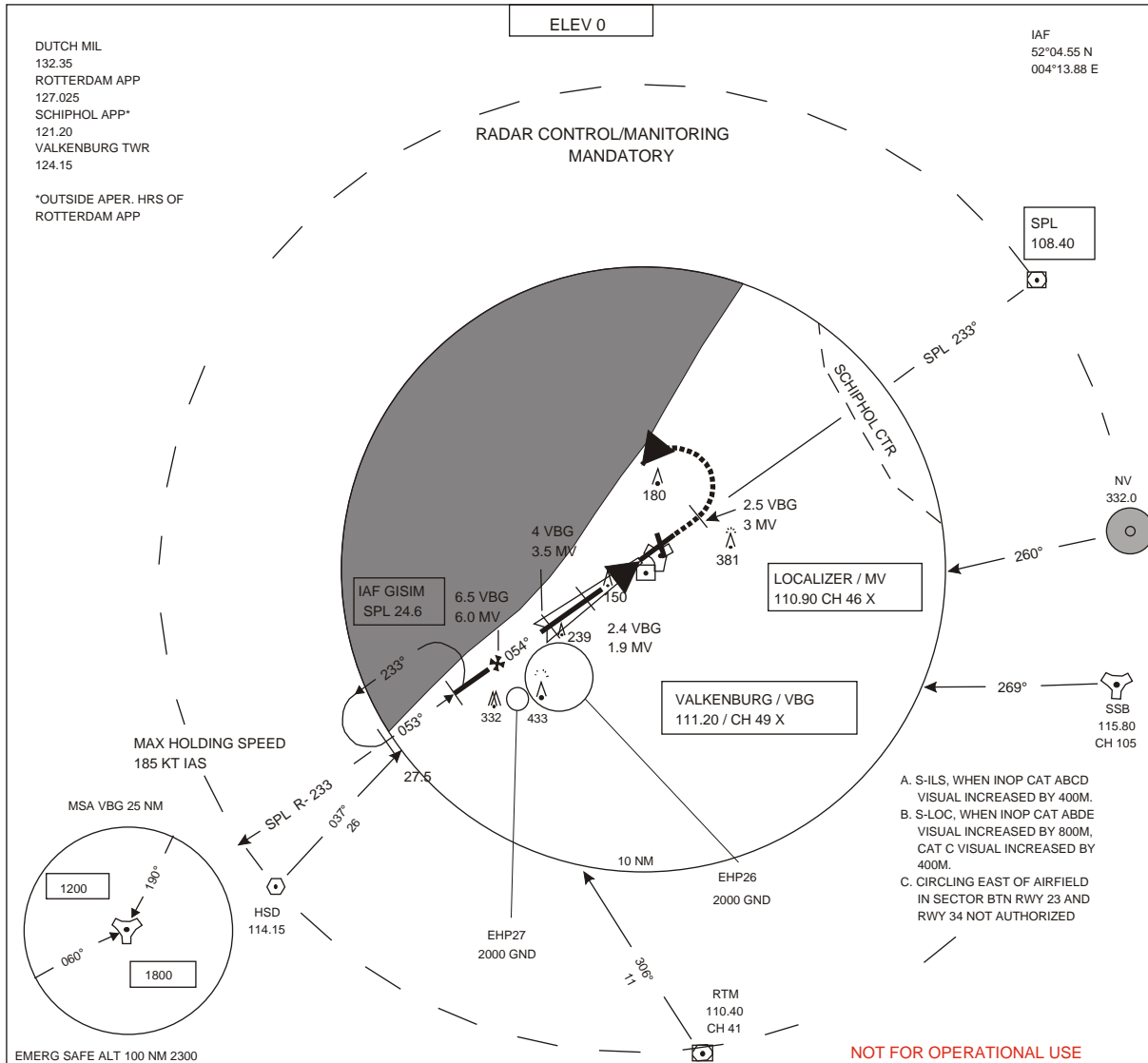
TWR	134.150 369.725 122.100	Valkenburg Tower
APP (TAR)	127.025 312.475	Rotterdam Approach O/R
	119.050 241.850	Schiphol Approach / Departure O/R - ATC discretion
	121.200 281.425	Schiphol Approach / Departure O/R - ATC discretion
	118.400	Schiphol Arrival O/R - ATC discretion
	131.150	Schiphol Arrival O/R - ATC discretion
	126.675	Schiphol Approach O/R - ATC discretion
	121.500 243.000	General Emergency in Amsterdam FIR



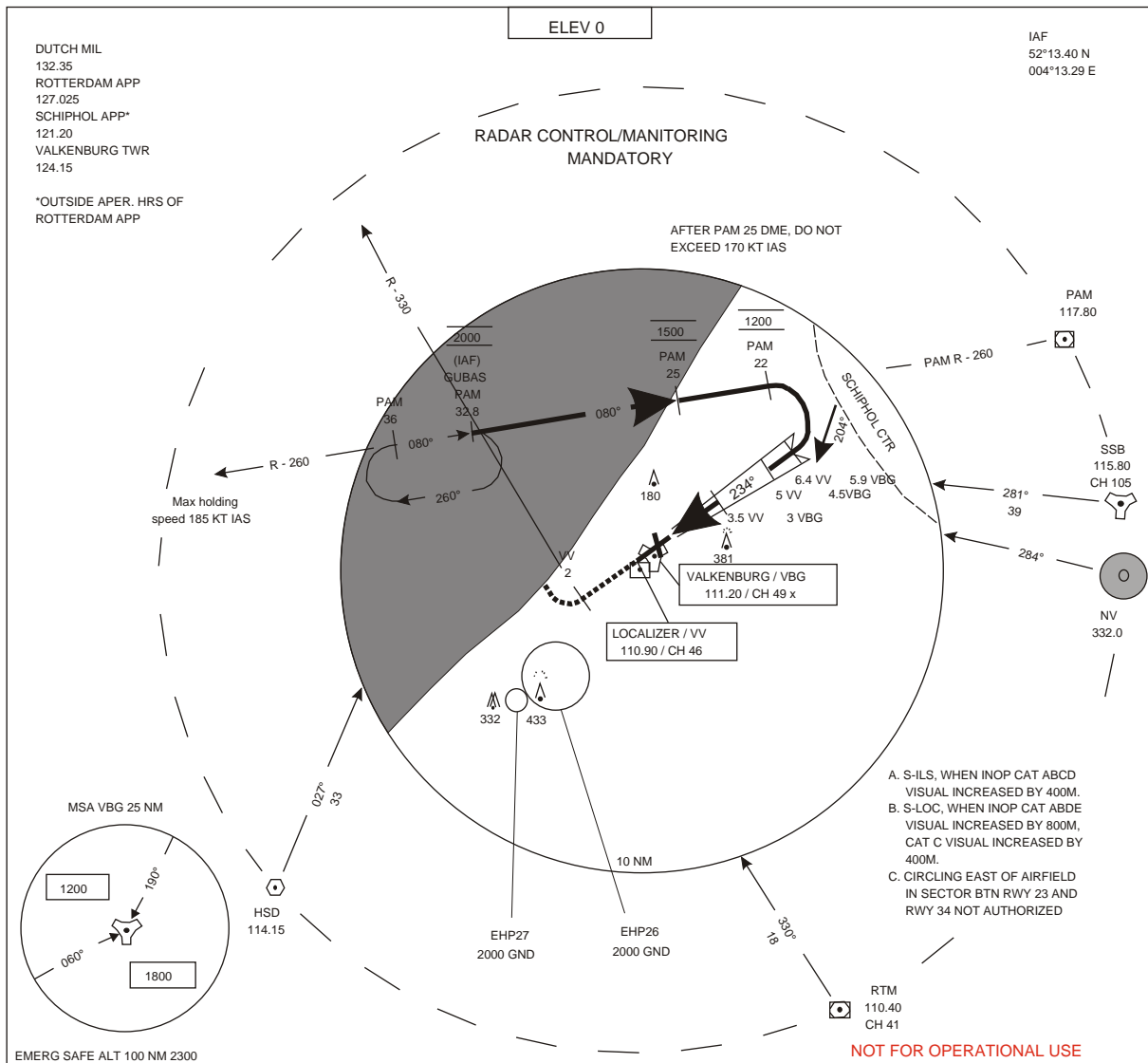
TWR	134.150 369.725 122.100	Valkenburg Tower
APP (TAR)	127.025 312.475	Rotterdam Approach O/R
	119.050 241.850	Schiphol Approach / Departure O/R - ATC discretion
	121.200 281.425	Schiphol Approach / Departure O/R - ATC discretion
	118.400	Schiphol Arrival O/R - ATC discretion
	131.150	Schiphol Arrival O/R - ATC discretion
	126.675	Schiphol Approach O/R - ATC discretion
	121.500 243.000	General Emergency in Amsterdam FIR





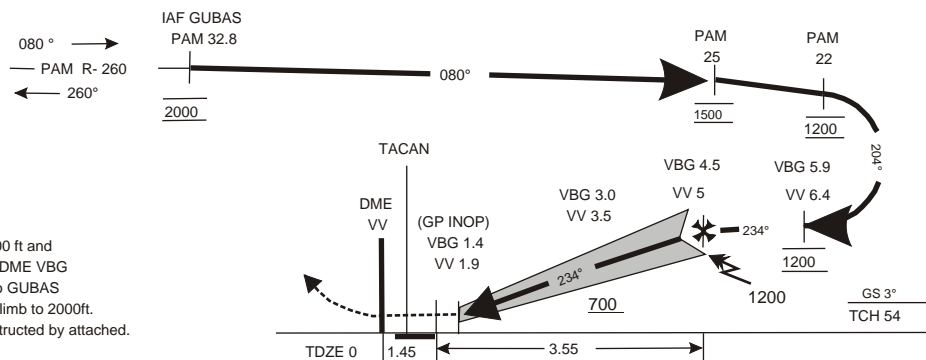






## MISSED APPROACH

At MAP climb straight ahead to 1200 ft and notify attached. At 2 DME VV / 2.5 DME VBG turn right to intercept RTM R-330 to GUBAS (RTM R-330/17.8 DME) and start climb to 2000ft. Hold at GUBAS at 2000 ft or as instructed by attached.



CATEGORY	A	B	C	D	E
*S-ILS 23	200 - 0.8 200 (200 - 0.8)				
**S-LOC 23	400 - 0.8 400 (400 - 0.8)		400 - 1.2 400 (400 - 1.2)		400 - 1.6 400 (400 - 1.6)
***CIRCLING	700 - 1.6 700 (700 - 1.6)		700 - 3.2 700 (700 - 3.2)	700 - 3.6 700 (700 - 3.6)	NOT AUTHORIZED